

Tiger Pro 72HC-TV

525-545 Watt

BIFACIAL MODULE WITH
TRANSPARENT BACKSHEET

P-Type

Positive power tolerance of 0~+3%

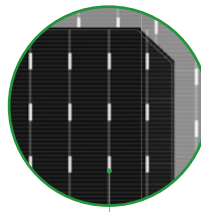
IEC61215(2016), IEC61730(2016)

ISO9001:2015: Quality Management System

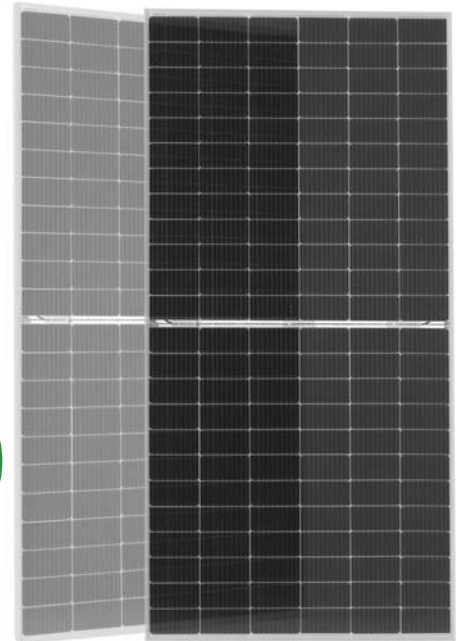
ISO14001:2015: Environment Management System

ISO45001:2018

Occupational health and safety management systems



Bifacial Technology



Key Features



Multi Busbar Technology

Better light trapping and current collection to improve module power output and reliability.



Light-weight design

Light-weight design using transparent backsheet for easy installation and low BOS cost.



Higher Power Output

Module power increases 5-25% generally, bringing significantly lower LCOE and higher IRR.



Longer Life-time Power Yield

0.45% annual power degradation and 30 year linear power warranty.



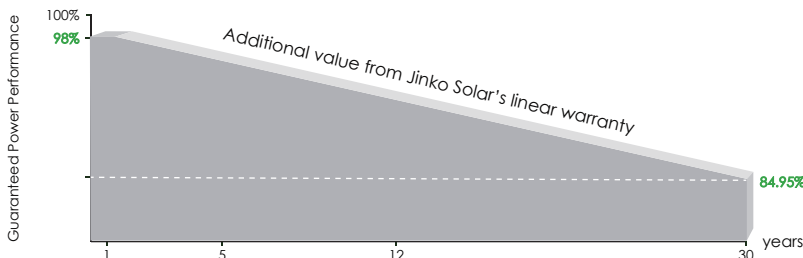
Enhanced Mechanical Load

Certified to withstand: wind load (2400 Pascal) and snow load (5400 Pascal).



POSITIVE QUALITY™
Continuous Quality Assurance

LINEAR PERFORMANCE WARRANTY

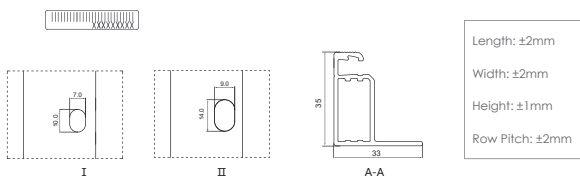
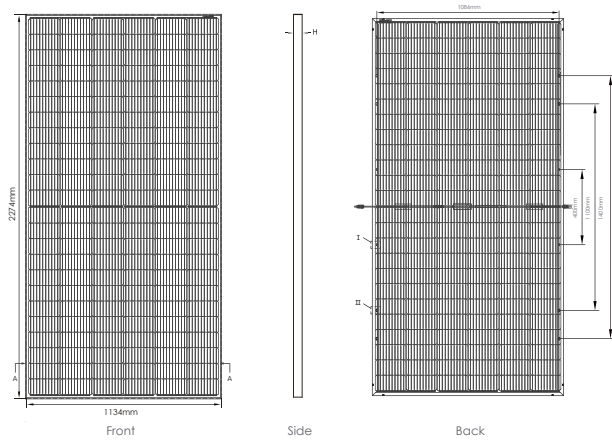


12 Year Product Warranty

30 Year Linear Power Warranty

0.45% Annual Degradation Over 30 years

Engineering Drawings

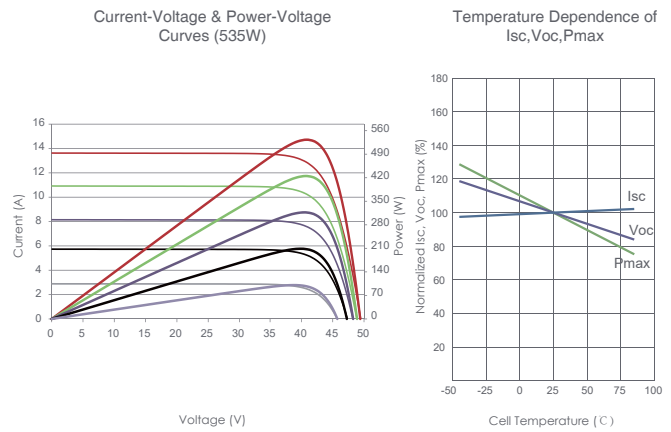


Packaging Configuration

(Two pallets = One stack)

31 pcs/pallets, 62 pcs/stack, 620 pcs/ 40'HQ Container

Electrical Performance & Temperature Dependence



Mechanical Characteristics

| | |
|---------------|---|
| Cell Type | P type Mono-crystalline |
| No. of cells | 144 (6×24) |
| Dimensions | 2274×1134×35mm (89.53×44.65×1.38 inch) |
| Weight | 28.9 kg (63.7 lbs) |
| Front Glass | 3.2mm, Anti-Reflection Coating, High Transmission, Low Iron, Tempered Glass |
| Frame | Anodized Aluminium Alloy |
| Junction Box | IP68 Rated |
| Output Cables | TUV 1×4.0mm ² (+): 400mm, (-): 200mm or Customized Length |

SPECIFICATIONS

| Module Type | JKM525M-72HL4-TV | | JKM530M-72HL4-TV | | JKM535M-72HL4-TV | | JKM540M-72HL4-TV | | JKM545M-72HL4-TV | |
|---|------------------|--------|------------------|--------|------------------|--------|------------------|--------|------------------|--------|
| | STC | NOCT | STC | NOCT | STC | NOCT | STC | NOCT | STC | NOCT |
| Maximum Power (Pmax) | 525Wp | 391Wp | 530Wp | 394Wp | 535Wp | 398Wp | 540Wp | 402Wp | 545Wp | 405Wp |
| Maximum Power Voltage (Vmp) | 40.61V | 37.74V | 40.71V | 37.88V | 40.81V | 37.98V | 40.91V | 38.08V | 41.07V | 38.18V |
| Maximum Power Current (Imp) | 12.93A | 10.35A | 13.02A | 10.41A | 13.11A | 10.48A | 13.20A | 10.55A | 13.27A | 10.62A |
| Open-circuit Voltage (Voc) | 49.27V | 46.50V | 49.35V | 46.58V | 49.42V | 46.65V | 49.49V | 46.71V | 49.65V | 46.86V |
| Short-circuit Current (Isc) | 13.64A | 11.02A | 13.71A | 11.07A | 13.79A | 11.14A | 13.87A | 11.20A | 13.94A | 11.26A |
| Module Efficiency STC (%) | 20.4% | | 20.6% | | 20.7% | | 20.9% | | 21.1% | |
| Operating Temperature(°C) | -40°C~+85°C | | | | | | | | | |
| Maximum system voltage | 1500VDC (IEC) | | | | | | | | | |
| Maximum series fuse rating | 30A | | | | | | | | | |
| Power tolerance | 0~+3% | | | | | | | | | |
| Temperature coefficients of Pmax | -0.35%/°C | | | | | | | | | |
| Temperature coefficients of Voc | -0.28%/°C | | | | | | | | | |
| Temperature coefficients of Isc | 0.048%/°C | | | | | | | | | |
| Nominal operating cell temperature (NOCT) | 45±2°C | | | | | | | | | |
| Refer. Bifacial Factor | 70±5% | | | | | | | | | |

BIFACIAL OUTPUT-REAR SIDE POWER GAIN

| | | Rear Side Power Gain | | | | |
|-----|---------------------------|----------------------|--------|--------|--------|--------|
| | | 5% | 15% | 25% | 35% | 45% |
| 5% | Maximum Power (Pmax) | 551Wp | 557Wp | 562Wp | 567Wp | 572Wp |
| | Module Efficiency STC (%) | 21.38% | 21.58% | 21.78% | 21.99% | 22.19% |
| 15% | Maximum Power (Pmax) | 604Wp | 610Wp | 615Wp | 621Wp | 623Wp |
| | Module Efficiency STC (%) | 23.41% | 23.64% | 23.86% | 24.08% | 24.30% |
| 25% | Maximum Power (Pmax) | 656Wp | 663Wp | 669Wp | 675Wp | 681Wp |
| | Module Efficiency STC (%) | 25.45% | 25.69% | 25.93% | 26.18% | 26.42% |

*STC: Irradiance 1000W/m²

Cell Temperature 25°C

AM=1.5

NOCT: Irradiance 800W/m²

Ambient Temperature 20°C

AM=1.5

Wind Speed 1m/s